

DESIGN LAB

BREAK ROOM

STOCK ROOM

MANAGER'S OFFICE

MEN'S TOILET ROOM

WOMEN'S TOILET ROOM

TOILET VESTIBULE

COAT RACK, GC TO PROVIDE FRT BLOCKING  
WALL MOUNTED FIRE EXTINGUISHER

WATER COOLER  
EMPLOYEE COUNTER, SEE C9/A-804

EMPLOYEE LOCKERS, FOIO

MOP SINK, SEE C9/A-805

CORNER GUARD, TYP OF 3 @ STOCKROOM, SEE C5/A-803

CUSTOMER SERVICE COUNTER, SEE E7/A-804

CORNER GUARD, TYP OF (5) AT SALES AREA, SEE C3/A-803

CUSTOMER SERVICE COUNTER, SEE E7/A-804

CUSTOMER SERVICE COUNTER, SEE E7/A-804

CUSTOMER SERVICE COUNTER, SEE E7/A-804

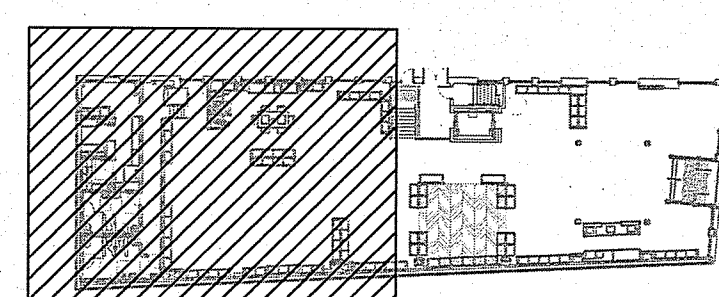
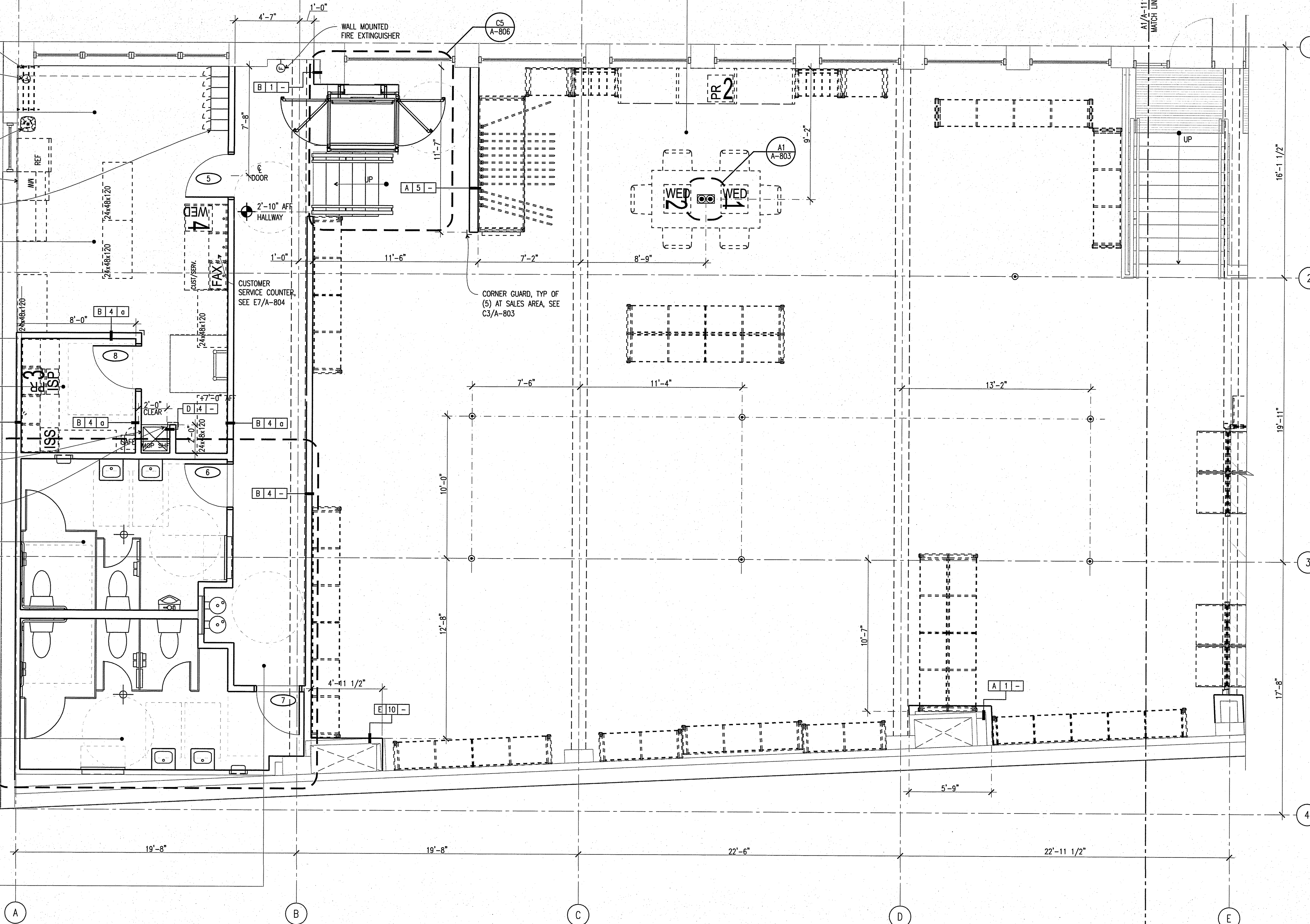
CUSTOMER SERVICE COUNTER, SEE E7/A-804

CUSTOMER SERVICE COUNTER, SEE E7/A-804

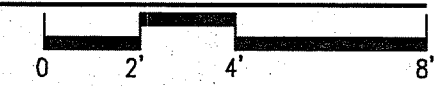
CUSTOMER SERVICE COUNTER, SEE E7/A-804

CUSTOMER SERVICE COUNTER, SEE E7/A-804

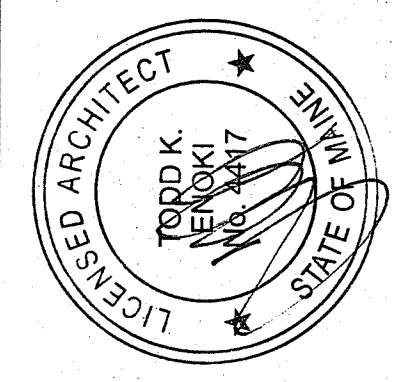
CUSTOMER SERVICE COUNTER, SEE E7/A-804



**A1** PARTIAL FIRST FLOOR PLAN - WEST  
1/4"=1'-0"



OWNER: **WILLIAMS-SONOMA, INC.**  
3250 Van Ness Avenue  
San Francisco, CA 94109  
T 415 616 8602  
F 415 439 8164  
www.williams-sonoma.com



**CALLISONRTKL**  
A DESIGN CONSULTANCY OF ARCADIS  
**CALLISONRTKL, INC.**  
www.callisonrtkl.com

**west elm**  
Downtown Portland  
164 Middle Street  
Portland, ME 04101  
PROJECT #006-160335.00

ISSUED / REVISED	DATE
PRELIMINARY SET	09/08/16
LL COORDINATION SET	11/08/16
LL/PERMIT SET	11/21/16

PARTIAL FIRST FLOOR PLAN - WEST

**A-112**